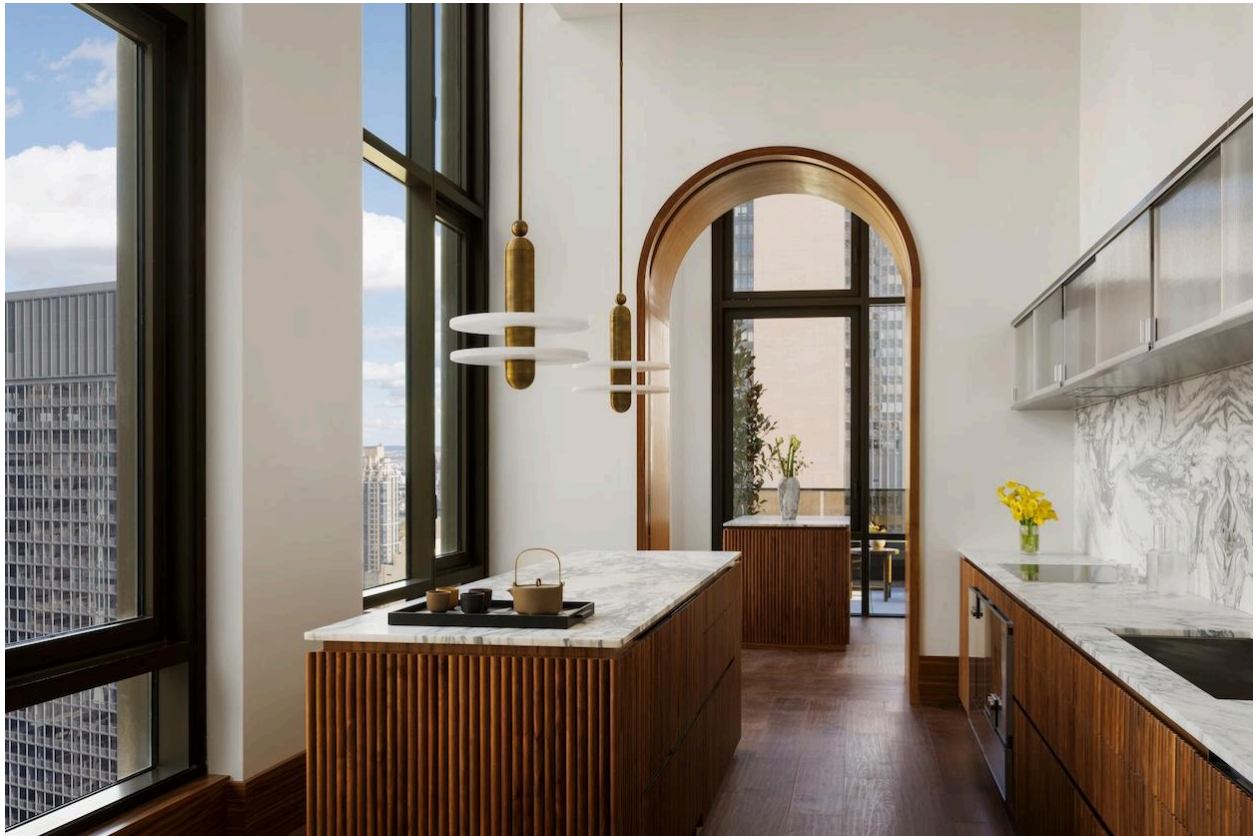


SURFACE

Designer of the Day: Lyndon Neri
and Rossana Hu of Neri&Hu
Design and Research Office



Since Lyndon Neri and Rossana Hu founded Neri&Hu Design and Research Office in 2004, their interdisciplinary practice has helmed substantial architectural, interior design, installation, furniture, and other design projects around the world. From The Lake Como Edition hotel to a residence in Cape Town, a theater in Suzhou, and a hospitality complex in Jingdezhen, the firm's current roster of projects furthers their global influence on our built environment. Neri&Hu recently introduced Monogram New York, a 35-story luxury residential condominium tower imagined as an Art Deco-inspired urban sanctuary. As lead interior architects, they established the aesthetic identity for the ground floor lobby and lounge spaces, rooftop bar, private dining rooms, library lounge, meeting rooms, and a wellness level comprising a gym and spa. Additionally, in the units, they designed all bathrooms and kitchens, and developed a turn-key package of furniture and accessories.



Photographer Colin Miller, Courtesy of Monogram New York

Here, we ask designers to take a selfie and give us an inside look at their life.

Occupation: We are the founders of Neri&Hu Design and Research Office, an interdisciplinary practice based in Shanghai.

Instagram: [@neriandhu](#)

Home Town: Ozamiz and Kaohsiung

Studio Location: Shanghai, China with a satellite office in Milan.

Describe what you make: Our growing global portfolio includes master planning, architecture, interior design, installations, furniture, product design, branding, and graphic works. We are currently working on projects in many countries; our team is multicultural. This diversity reinforces our core vision: to embrace a global worldview where overlapping design disciplines come together to form a new paradigm for architecture.

The most important thing you've designed to date: It's hard to pin one project as the most important. We would argue perhaps our first architectural project allowed us to define who we are as a practice and this was the Waterhouse, located on the Bund in Shanghai. For the Waterhouse, it was very important for us that the design of the hotel take cue from the neighborhoods of Shanghai, but not in a touristic way. We wanted the guests of the hotel to experience an abstracted, or interpreted, version of Shanghai, so we embedded in the design many features of the city in an unexpected and sometimes uncanny way.

There is a strong spatial experience inspired by the traditional long-tang (lanes) of Shanghai, where there is a blurring of interior/exterior spaces, private/public spaces, where one can see from one's guestroom windows directly into the hotel lobby or the restaurant. Also spread across different surfaces of the hotel are graphic installations of quotes regarding traveling from past Shanghainese literati and local phrases about food, clothing, and everyday practices well known to locals but not quite understandable to non-locals. The architectural form and material of the new rooftop addition echo that of ships passing by the Huangpu River in front of the hotel.





Neri&Hu, Nantou City Guesthouse, photo by Chen Hao

Describe the problem your work solves: We love to deal with issues of adaptive reuse, old and new, heritage, memory, identity, urban regeneration, and sustainability. Materials are for us a way to express the dialogue between the old and the new. Material origins tell a story of how a building came into being and is for us a reflection of the technological and cultural values of our society at large.

Share the project you are working on now: We are currently engaged in a diverse range of projects across multiple regions worldwide, including an art center in Utah, a wellness retreat in Merano, a residential project in Dubai, a park in Tbilisi, an office headquarters in Seoul, Janu resorts in the Maldives and Jeju Island, a residential project and hotel in Cape Town, a hospitality project in Jingdezhen, a boutique hotel in Moganshan, a school project on Chongming Island, and private residences in Kuala Lumpur, Berlin, and Manila. We are also working on a number of interior projects for Blue Bottle in Asia, as well as the rollout concept in the U.S.

Alongside our architectural and interior work, we presented our latest product designs at Milan Design Week this year: a tile collection and a series of objects for Mutina, a new lighting collection for Cassina, several objects for Editions, and a new bathroom accessories collection for Agape.

What you absolutely have to have in your studio: Sketchbooks, tracing papers, pencils preferably 2b, books, coffee, green tea and lots of snacks.





Neri&Hu, Dalian Cultural Center, photo by Runzi Zhu

What you do when you're not working: Traveling, teaching, drawing, and reading.

Sources of creative envy (dead or alive): The everyday, the mundane, and the ordinary.

The distraction you want to eliminate: Noise. Having peace within is key.

Concrete or marble? Stone

High-Rise Or Townhouse? Neither

Remember Or Forget? Remember

Aliens Or Ghosts? Neither

Dark Or Light? Light





Neri&Hu Project, Zhishan Residence, photo by Studio Millspace